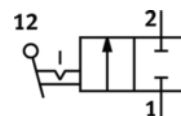
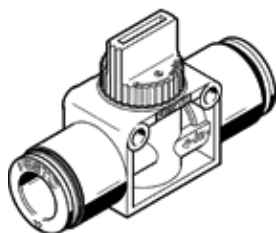


# Shut-off valve HE-2-QS-12

Part number: 153470

FESTO



## Data sheet

Feature	values
Valve function	2/2 bistable
Pneumatic connection, port 1	QS-12
Pneumatic connection, port 2	QS-12
Type of actuation	manual
Mounting type	Optional Line installation with through hole
Standard nominal flow rate	830 l/min
Nominal size	7 mm
Operating pressure	-0.95 ... 10 bar
Ambient temperature	0 ... 60 °C
Materials information, housing	PBT-reinforced
Operating medium	Compressed air in accordance with ISO8573-1:2010 [7:-:-]
Sealing principle	soft
Assembly position	Any
Design structure	Piston slide
Type of piloting	direct
Flow direction	non reversible
Product weight	50 g