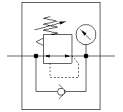
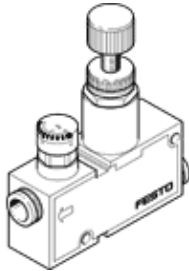


pressure regulator LRMA-QS-6

Part number: 153496

FESTO

With pressure gauge.



Data sheet

| Feature | Value |
|------------------------------|---|
| Controller function | Output pressure constant with secondary exhaust |
| Pneumatic connection, port 1 | QS-6 |
| Pneumatic connection, port 2 | QS-6 |
| Mounting type | with through hole |
| Standard nominal flow rate | 76 l/min |
| Inlet pressure 1 | 0 ... 9 bar |
| Ambient temperature | 0 ... 60 °C |
| Material housing | PBT-reinforced |
| Operating medium | Compressed air in accordance with ISO8573-1:2010 [7:-:-] |
| Actuator lock | Knurled screw with lock nut |
| Assembly position | Any |
| Design structure | directly-controlled piston regulator with looped-through compressed air supply |
| Pressure gauge | with pressure gauge |
| Pressure regulation range | 1 ... 8 bar |
| Product weight | 45 g |
| Material of threaded plug | Brass Nickel plated |
| Material of threaded seal | PTFE |