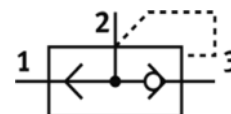
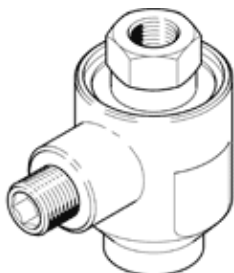


Quick exhaust valve

SE-1/8-B

Part number: 9685

FESTO



Data sheet

Feature	values
Valve function	Quick exhaust
Pneumatic connection, port 1	G1/8
Pneumatic connection, port 2	G1/8
Mounting type	Threaded
Standard nominal flow rate, exhaust	660 l/min
Standard nominal flow rate for pressurisation 6->5 bar	300 l/min
Operating pressure	0.5 ... 10 bar
Ambient temperature	-20 ... 75 °C
Materials information, housing	Zinc die-casting
Operating medium	Compressed air in accordance with ISO8573-1:2010 [7:4:4]
Nominal size	5 mm
Assembly position	Any
Note on operating and pilot medium	Lubricated operation possible (subsequently required for further operation)
Medium temperature	-20 ... 75 °C
Sound pressure level	100 dB(A)
Product weight	75 g
Pneumatic connection, port 3	G1/8
Materials information for seals	NBR