

### Filter regulator unit

Nominal pressure 12 bar  
with lockable regulator head

Type LFR-...-S-B

with lockable regulator head  
and 5 µm filter cartridge

Type LFR-...-S-5M-B

with lockable regulator head

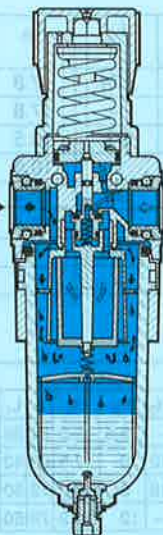
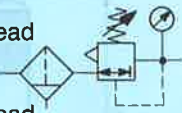
Type LFRS-...-S-B

Nominal pressure 7 bar:

For special applications, e.g. control systems in the pressure range of 3 to 5 bar, a unit is available with optimised flow rate and control characteristics.

with lockable regulator head

Type LFR-...-S-7-B



WA-1



LFR



LFRS



FRS



#### Accessories:

Filter cartridge 5 µm, type LFP-...

Metal bowl guard, type FRS-...

Mounting bracket and distributor, see overleaf

For replacement pressure gauges, see sheet 3.310

Automatic condensate drain, type WA-1

This unit can be screwed in to replace the drain screw. Technical data, see sheet 7.160.

Here, a filter and regulator are combined in a single unit.

The sintered filter with water separator frees the upstream supply air of dirt, pipe scale, rust and condensate water.

The 40 µm filter element can easily be replaced by a 5 µm filter element (snap connection).

The filter bowl can be quickly removed thanks to bayonet connection.

The regulator holds the downstream compressed air supply to the preset operating pressure and compensates for pressure fluctuations.

In the case of type LFRS, the regulator head can be locked when the required operating pressure has been set. Once the key has been removed, it is no longer possible to adjust the pressure.

There are two designs:

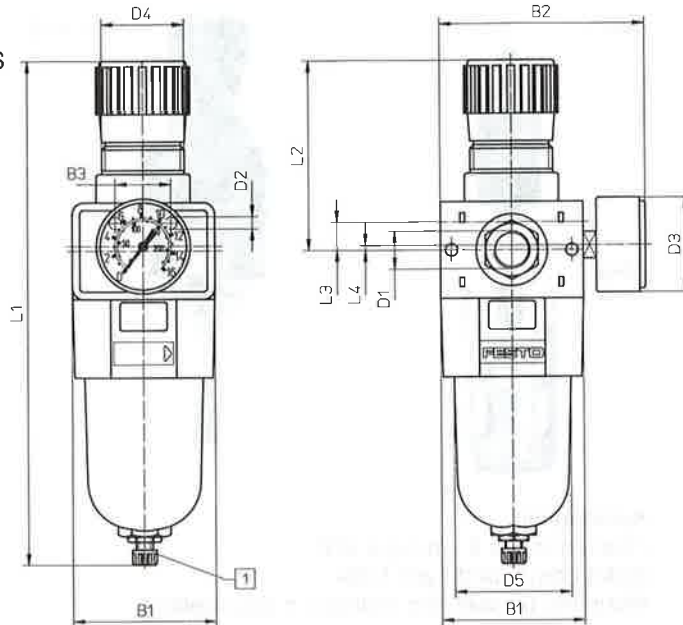
Type LFR-...-S-B: Control range 0 to 12 bar, indicator range 0 to 16 bar

Type LFR-...-S-7-B: Control range 0 to 7 bar, indicator range 0 to 10 bar

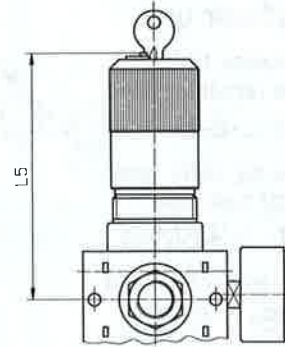
Order code Part No./Type	Nominal pressure 12 bar	150 018 LFR-1/8-S-B	150 024 LFR-1/4-S-B	150 030 LFR-3/8-S-B	150 036 LFR-1/2-S-B
			150 022 LFR-1/8-S-5M	150 027 LFR-1/4-S-5M-B	150 034 LFR-3/8-S-5M-B
	Nominal pressure 7 bar	150 019 LFR-1/8-S-7-B	150 026 LFR-1/4-S-7-B	150 032 LFR-3/8-S-7-B	150 038 LFR-1/2-S-7-B
	Lockable with key	14 974 LFRS-1/8-S-B	14 975 LFRS-1/4-S-B	14 976 LFRS-3/8-S-B	14 977 LFRS-1/2-S-B
	Filter element 5 µm	11 921 LFP-1/8-S-5M	9277 LFP-1/4-3/8-S-M5		9279 LFP-1/2-S-5M
	Metal bowl guard	11 925 FRS-1/8-S	10 635 FRS-1/4-S-B	14 801 FRS-3/8-S-B	8843 FRS-1/2-S-B
Medium		Compressed air			
Design		Sintered filter with water separator, piston type relieving regulator			
Mounting		Through-holes in housing or mounting bracket			
Mounting position		vertical ± 5°			
Connection		G 1/8	G 1/4	G 3/8	G 1/2
Standard nominal flow rate*	Type LFR-...-S-B, LFRS-...-S-B	840 l/min	2290 l/min	3220 l/min	4120 l/min
	LFR-...-S-5M-B	810 l/min	2130 l/min	2750 l/min	3860 l/min
	LFR-...-S-7-B	1040 l/min	2370 l/min	3360 l/min	4710 l/min
Upstream pressure max.		max. 14 bar			
Operating pressure		Type LFR-...-S-B: max. 12 bar; Type LFR-...-S-7-B: max. 7 bar			
Filter element		Standard: 40 µm; type LFR-...-5M; type LFR: 5 µm average pore size			
Condensate volume		10 cm <sup>3</sup>	43 cm <sup>3</sup>	50 cm <sup>3</sup>	86 cm <sup>3</sup>
Temperature range		- 10 to +60 °C			
Materials		Housing: Polyamide, glass fibre reinforced; filter bowl: Special polyamide; seals: Perbunan			
Weight		0.275 kg	0.585 kg	0.735 kg	1.055 kg

\* with upstream pressure of 10 bar, operating pressure and Δp = 1 bar

Type LFR...-S  
LFRS...-S



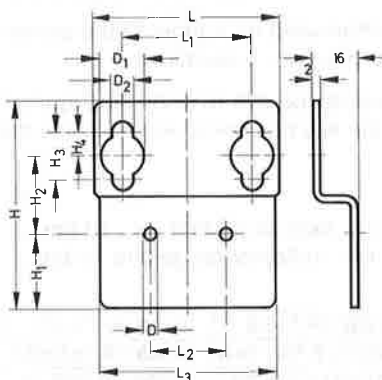
LFRS...



- 1 Condensate drain screw
- 2nd pressure gauge connector offset by 180° (G 1/4)
- Flow direction shown by arrow

Type	B <sub>1</sub>	B <sub>2</sub>	B <sub>3</sub>	D <sub>1</sub>	D <sub>2</sub> ∅	D <sub>3</sub> ∅	D <sub>4</sub>	D <sub>5</sub> ∅	L <sub>1</sub>	L <sub>2</sub>	L <sub>3</sub>	L <sub>4</sub>	L <sub>5</sub>
LFR-1/8-S-B	42	72	21	G 1/8	3.6	40	M30 x 1.5	31	176	74	7.8	—	—
LFRS-1/8-S-B	42	72	21	G 1/8	3.6	40	M30 x 1.5	31	—	—	7.8	—	101
LFR-1/4-S-B	60	93	27	G 1/4	5.1	50	M36 x 1.5	47.4	214	93	10.5	—	—
LFRS-1/4-S-B	60	93	27	G 1/4	5.1	50	M36 x 1.5	47.4	—	—	10.5	—	115
LFR-3/8-S-B	68	101	29.5	G 3/8	5.1	50	M36 x 1.5	47.4	237	96	12.4	1.5	—
LFRS-3/8-S-B	68	101	29.5	G 3/8	5.1	50	M36 x 1.5	47.4	—	—	12.4	1.5	118
LFR-1/2-S-B	76	109	29.7	G 1/2	6.1	50	M44 x 1.5	62.3	274	108	14.5	2.5	—
LFRS-1/2-S-B	76	109	29.7	G 1/2	6.1	50	M44 x 1.5	62.3	—	—	14.5	2.5	130

Mounting bracket, type HR...-S-B



Material: Zinc coated steel

Order code		Dimensions													Weight			
Part No.	Type	B	D	D <sub>1</sub>	D <sub>2</sub>	H	H <sub>1</sub>	H <sub>2</sub>	H <sub>3</sub>	H <sub>4</sub>	H <sub>5</sub>	L	L <sub>1</sub>	L <sub>2</sub>	L <sub>3</sub>	L <sub>4</sub>	L <sub>5</sub>	kg
150 257	HR-1/8-S-B	1.5	3.5	10.2	5.5	48	21.3	14.7	—	5.5	5.5	52	36	21	41.4	0.030		
150 258	HR-1/4-S-B	2	5.5	11	5.5	64	28.5	21.5	12	6	7.5	60	42	27	60	0.050		
150 259	HR-3/8-S-B	2	5.5	17	8.5	84	33	30	18	9	8.2	72	50	29.7	68	0.085		
150 260	HR-1/2-S-B	2	6.5	17	8.5	88	40	25	—	12	10.2	76	50	29.7	76	0.100		

The distributor is fitted between the filter regulator, type LFR, and the lubricator LÖ. The additional air connection G 1/4 allows filtered, non-lubricated compressed air to be branched off, e.g. for the supply to air barriers, sensors and control systems, or for especially clean compressed air in conjunction with micro filter of type LFM.

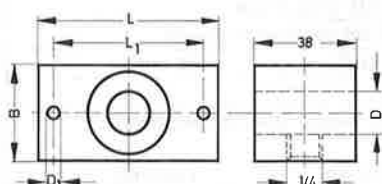
Distributor, type FRZ...-S-B



Scope of delivery:

1 distributor, 4 socket head screws, 4 hexagon nuts, 2 O-rings, 2 threaded inserts, 2 end caps

Order code		B	D	D <sub>1</sub>	E <sub>1</sub>	H	H <sub>1</sub>	L	L <sub>1</sub>	Weight	Material
Part No.	Type	∅	∅							kg	
11 552	FZR-1/8-S	34	8.5	4.5	G 1/8	32	27	42	31	0.065	Plastic
6763	FZR-1/4-S-B	38	12	5.5	G 1/4	39	33	60	48.4	0.115	
6764	FZR-3/8-S-B	38	16	5.5	G 1/4	44	38	68	56.8	0.165	
6765	FZR-1/2-S-B	38	20	6.5	G 1/4	50	46	76	63.7	0.205	



Example:

