

5/2 Directional Control Valves



Nominal sizes 4 and 6
 Pneumatically actuated
 Lapped spool and sleeve valves
 Port sizes G 1/8 and G 1/4
 Operating pressure 0 to 16 bar

Catalog Register
P 8

Publication 7501006.06.09.95



Description

Directional control valve for filtered and lubricated¹⁾ air

Flow direction: Optional
 Temperature range: -10 to +60 °C



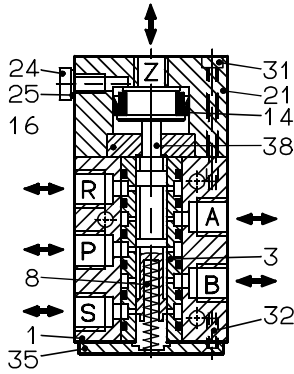
Parameters

Symbol	Nominal size	Port size	Operating pressure [bar]		Control pressure [bar]		$k_{v\text{-value}}$ (CV (US) = $k_v \times 1.2$)	Weight [kg]	Sectional drawing No.	Dimensional drawing No.	Cat. No.
			min.	max.	min.	max.					
	4	G 1/8	0	16	0.8	10	0.28	0.15	01	01	4030606
	6	G 1/4	0	16	0.8	10	0.80	0.30	01	02	4031306
	4	G 1/8	0	16	0.5	10	0.28	0.18	02	03	4030706
	6	G 1/4	0	16	0.5	10	0.80	0.38	02	04	4031406

¹⁾ Spindle oil: max. 9.5 mm²/s, Filter: Filtration ≤ 10 μm

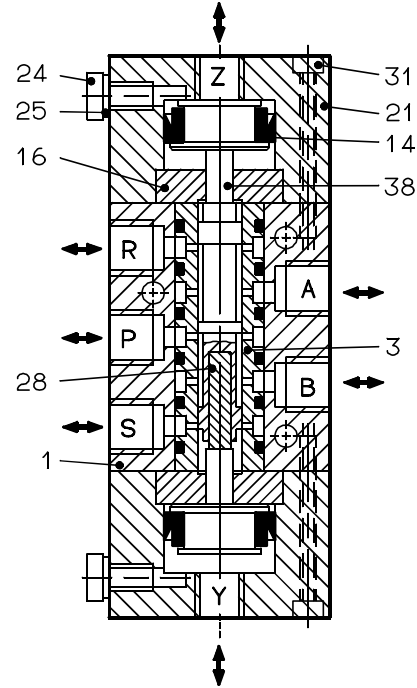
Sectional drawings

01



- 1 Body
- 3 Bush assly.
- 8 Spring
- 14 Lip ring
- 16 Disc
- 21 Body
- 24 Screw
- 25 Sealing ring
- 31 Screw
- 32 Screw
- 35 Plate
- 38 Spool

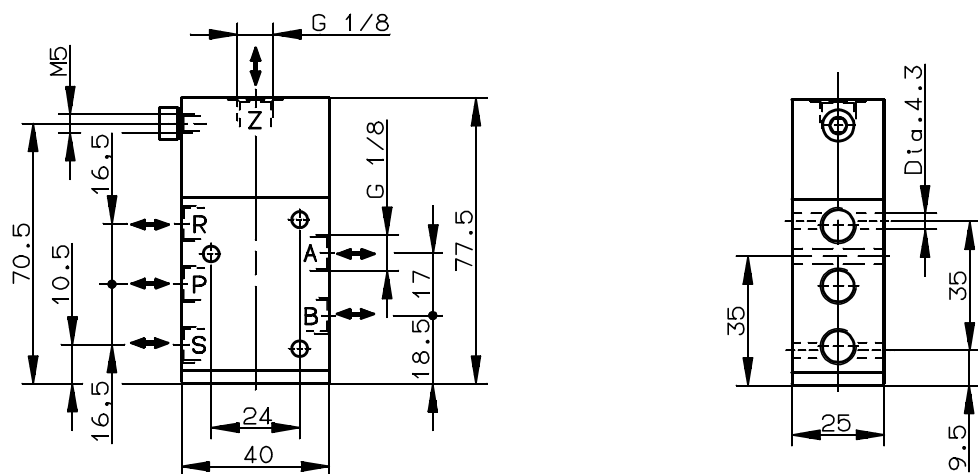
02



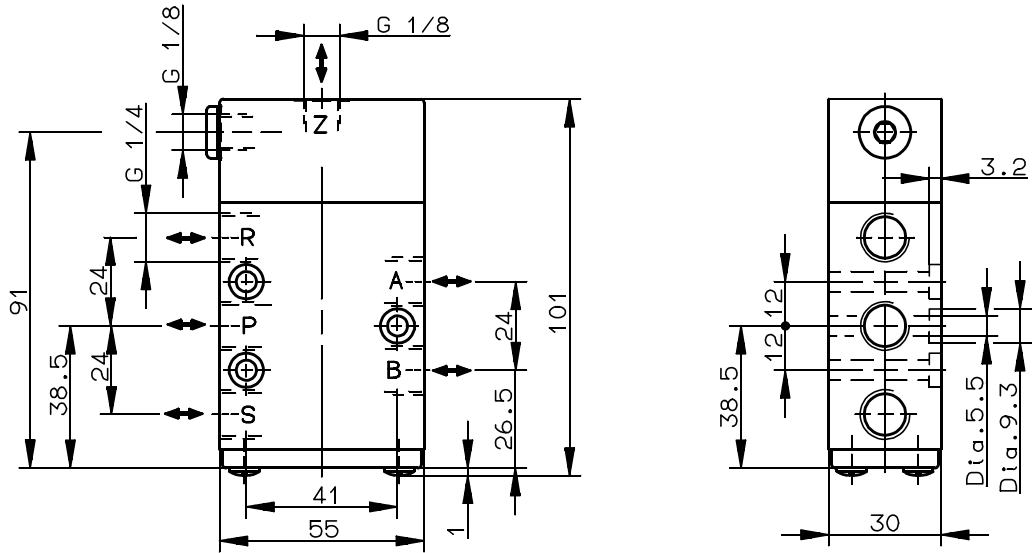
- 1 Body
- 3 Bush assly.
- 14 Lipperring
- 16 Disc
- 21 Body
- 24 Screw
- 25 Sealing ring
- 28 Bolt
- 31 Screw
- 38 Spool

Dimensional drawings [mm]

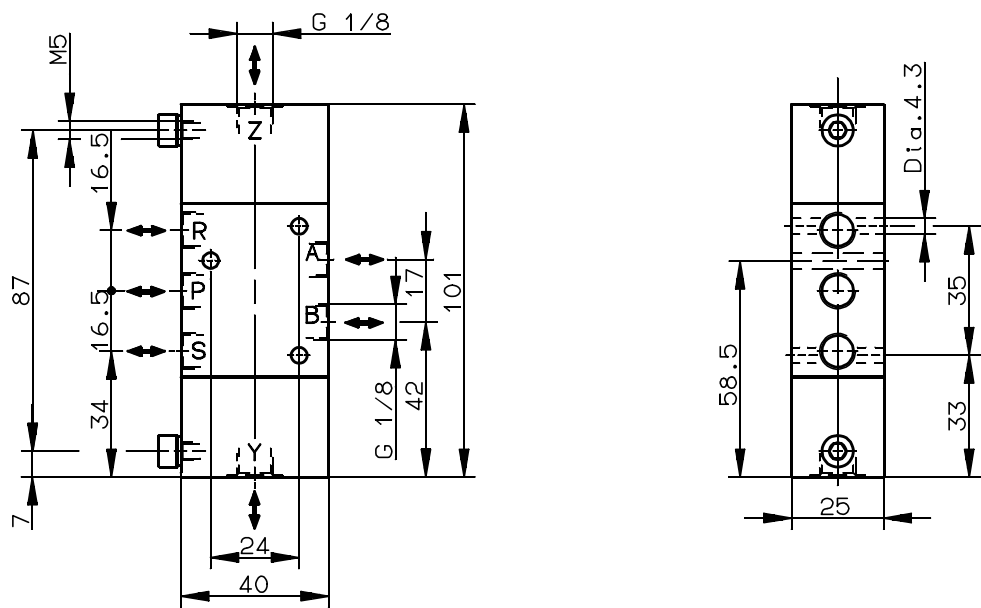
01



02



03



04

