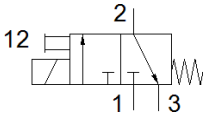
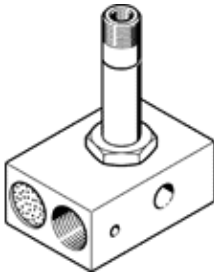


# solenoid valve MFH-3-1/8-SEU

Part number: 11121  
Product to be discontinued

Type to be discontinued. Available until 2019. See Support Portal for alternative products.

With manual override and integrated quick exhaust



## Data sheet

Feature	Value
Valve function	3/2 closed, monostable
Operating pressure	0.5 ... 8 bar
Protection class	IP65
Authorisation	c CSA us (OL) c UL us - Recognized (OL)
Pneumatic connection, port 1	G1/8
Pneumatic connection, port 2	G1/8
Pneumatic connection, port 3	G1/8
Materials note	Conforms to RoHS